

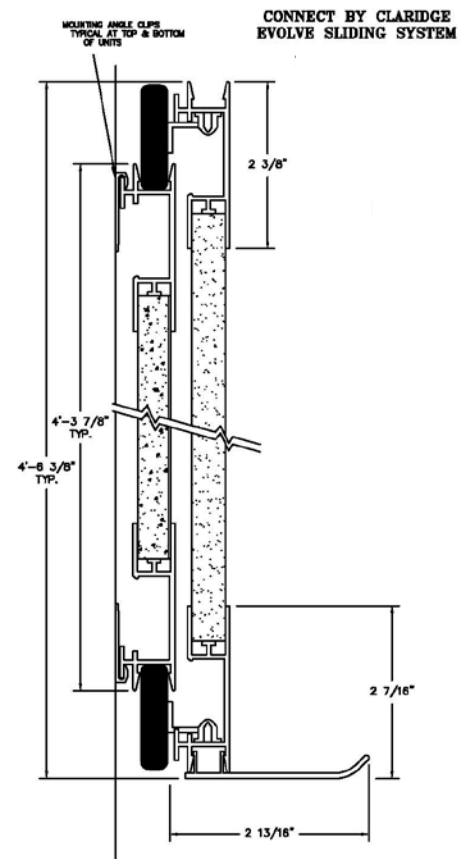
Installation Instructions for  
**EVOLVE SLIDING SYSTEM**

FIXED PANEL

1. When installing bottom clips for fixed panel, determine and mark the height of the bottom of the board.
2. Drill required holes 2" above the desired height allowing the clip to rest on the screw when securing to the wall.
3. To attach the top clips drill down 1-1/2" from the top of the fixed board height. Hold the clip in the highest position when tightening to the wall. Do not over tighten as the clips will need to be tapped down to secure the board.
4. Adhesive is recommended for permanent installations. **If using adhesive**, apply to the back of the board according to manufacturer's printed instructions, or by staggering egg-size globs of adhesive approximately 12" o.c. Adhesive should not be closer than 6" from edge of board. Caution should be exercised not to use adhesive too sparingly or to allow adhesive to remain on back of board more than 10 minutes before hanging.
5. Rest the bottom of the board's built-in hanger on the clip and press the board to the wall.
6. To fully engage the clip and hanger, carefully tap down the top clips on to the built-in hanger on the trim.

SLIDING PANEL

1. When attaching the sliding panel, remove the bottom wheel assembly by removing two screws in each assembly.
2. Position the top rollers in the guide on top of the fixed back panel.
3. Re-attach the wheel assembly to the bottom of the sliding panel making sure the wheel is in the track of the fixed panel.
4. To install accessory tray, insert back leg of tray into trim and rotate up into position, snapping tray into place. (Note: A rubber mallet can be used to tap tray into place. If mallet is used to seat tray, use only in position of snap mechanism.)



**CLARIDGE PRODUCTS AND EQUIPMENT, INC.**

P. O. BOX 910

HARRISON, ARKANSAS 72602-0910

PHONE: 870-743-2200 FAX: 870-743-1908

TOLL FREE: 800-434-4610

e-mail: [claridge@claridgeproducts.com](mailto:claridge@claridgeproducts.com)



Revision A.01  
01-16-2018